

Belegung

FS-Supreme-5ms

ID 0,25mm, df 0,25µm, Länge 50m

5% Phenylpolysilphenylenphase

Max. Temperatur: 340/360°C

Dimensionen

50 m x 0,25 mm ID, df 0,17 µm

Artikel Nr.

[225451](#)

Probe

Phenoltest

Substanzen: Phenol / 2-Chlorphenol / 2-Nitrophenol /
2,4-Dimethylphenol / 2,4-Dichlorphenol / 4-Chlor-3-methylphenol /
2,4,6-Trichlorphenol / 2,4-Dinitrophenol / 4-Nitrophenol /
2-Methyl-4,6-dinitrophenol / Pentachlorphenol

Ofen

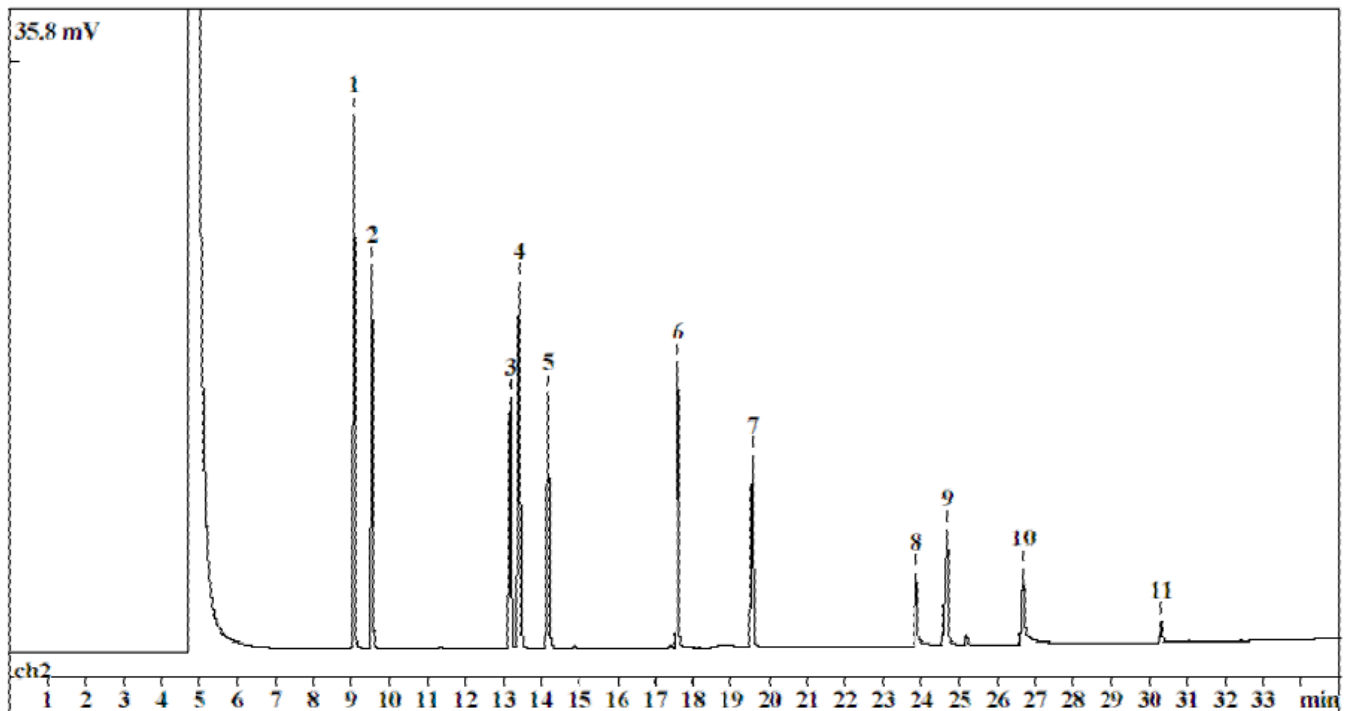
80°C auf 280°C mit 5°C/min

Trärgas

1 bar N2 x Split 10 ml/min

Detektor

FID 250°C



- | | |
|----------------------------|---------------------------------|
| 1.) Phenol | 7.) 2,4,6-Trichlorphenol |
| 2.) 2-Chlorphenol | 8.) 2,4-Dinitrophenol |
| 3.) 2-Nitrophenol | 9.) 4-Nitrophenol |
| 4.) 2,4-Dimethylphenol | 10.) 2-Methyl-4,6-dinitrophenol |
| 5.) 2,4-Dichlorphenol | 11.) Pentachlorphenol |
| 6.) 4-Chlor-3-methylphenol | |