



Belegung

FS-CW 20M-AM

Dimensionen

25 m x 0,25 mm ID

Artikel Nr.

[125077](#)

Probe

Mono-/Di-/Trimethylamin + EtOH in Wasser

Ofen

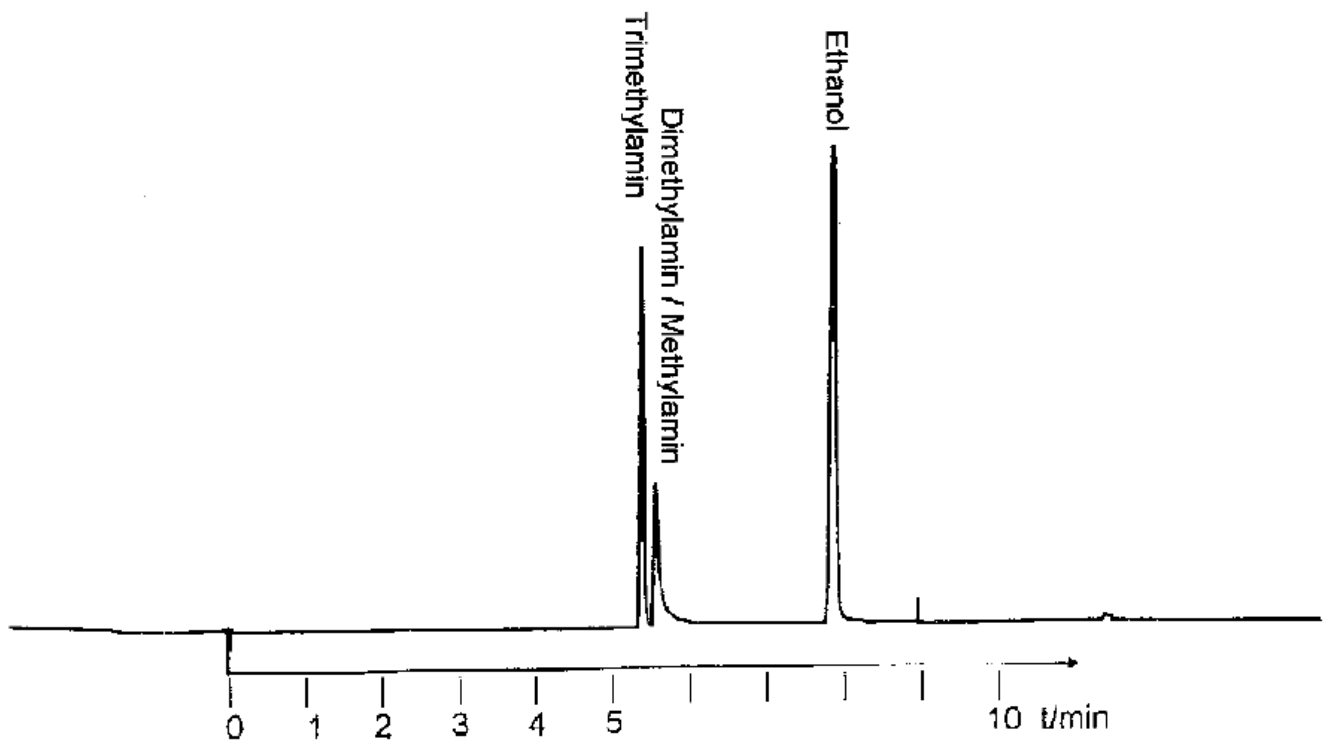
70°C isotherm

Trärgas

0,3 bar N<sub>2</sub>

Detektor

FID, 1 x 8



1.) Trimethylamin

3.) Methylamin

2.) Dimethylamin

4.) Ethanol