

Belegung

FS-Supreme-5ms

ID 0,25mm, df 0,10µm, length 50m

5% Phenylpolysilphenylenphase

Max. Temperature: 340/360°C

Dimensionen

50 m x 0,25 mm ID, df 0,13 µm

Artikel Nr.

[225448](#)

Probe

Phenol-Test

Substanzen: Phenol / 2-Chlorphenol / 2-Nitrophenol /  
2,4-Dimethylphenol / 2,4-Dichlorphenol / 4-Chlor-3-methylphenol /  
2,4,6-Trichlorphenol / 2,4-Dinitrophenol / 4-Nitrophenol /  
2-Methyl-4,6-dinitrophenol / Pentachlorphenol

Ofen

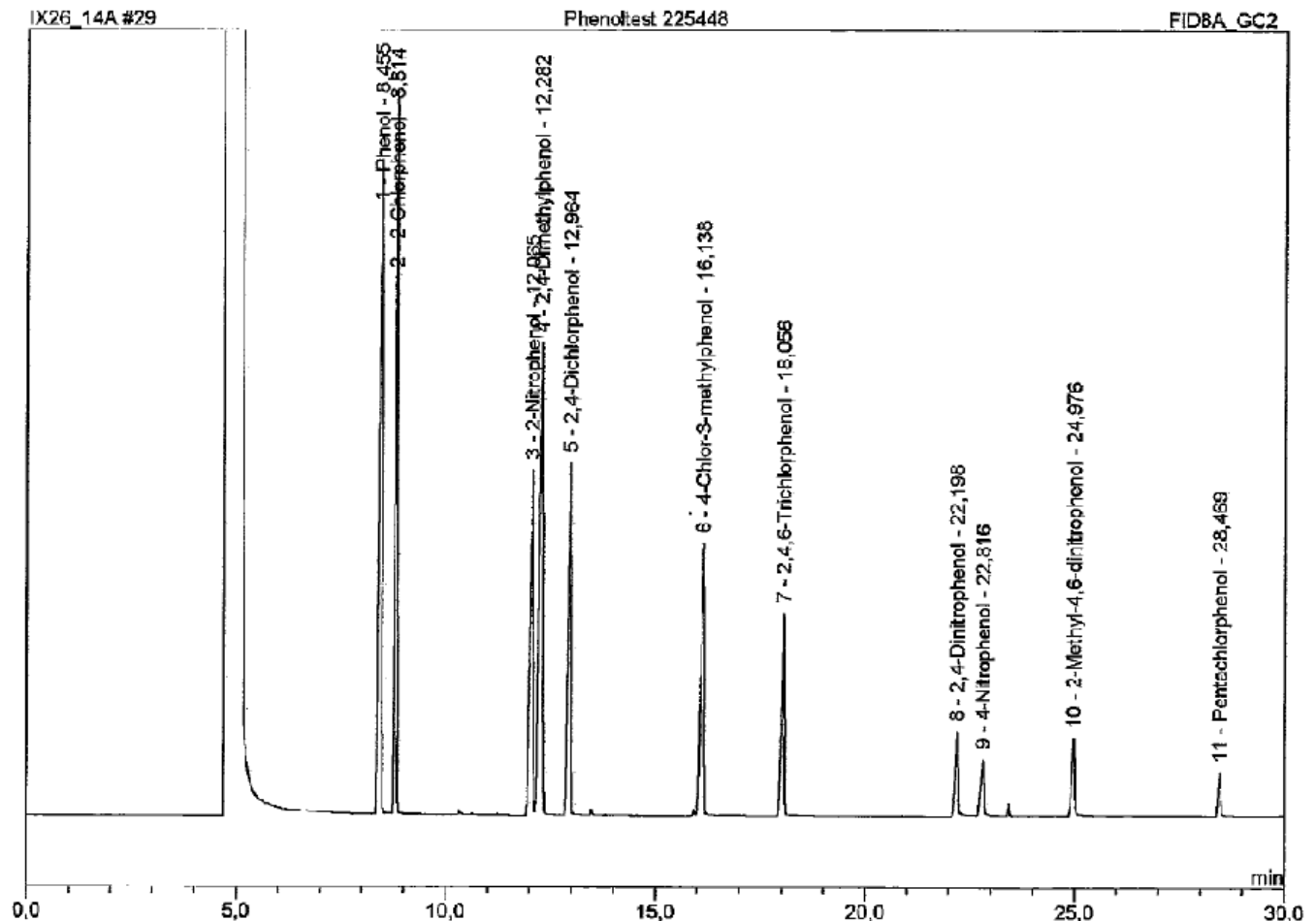
80-200°C mit 5°C/min

Trärgas

1 bar N2

Detektor

FID 250°C



1.) Phenol

7.) 2,4,6-Trichlorphenol

2.) 2-Chlorphenol

8.) 2,4-Dinitrophenol

3.) 2-Nitrophenol

9.) 4-Nitrophenol

4.) 2,4-Dimethylphenol

10.) Methyl-2-dinitro-2,4-phenol

5.) 2,4-Dichlorphenol

11.) Pentachlorphenol



6.) 4-Chlor-3-methylphenol