



Belegung

FS-Innopeg-2000

ID 0,25mm, df 0,25µm, Länge 30m

Max. Temperatur: 260/280°C

Dimensionen

30 m x 0,25 mm ID, df 0,25 µm

Artikel Nr.

[22517130](#)

Probe

Xylole

Substanzen: o-Xylol / m-Xylol / p-Xylol

Ofen

80°C

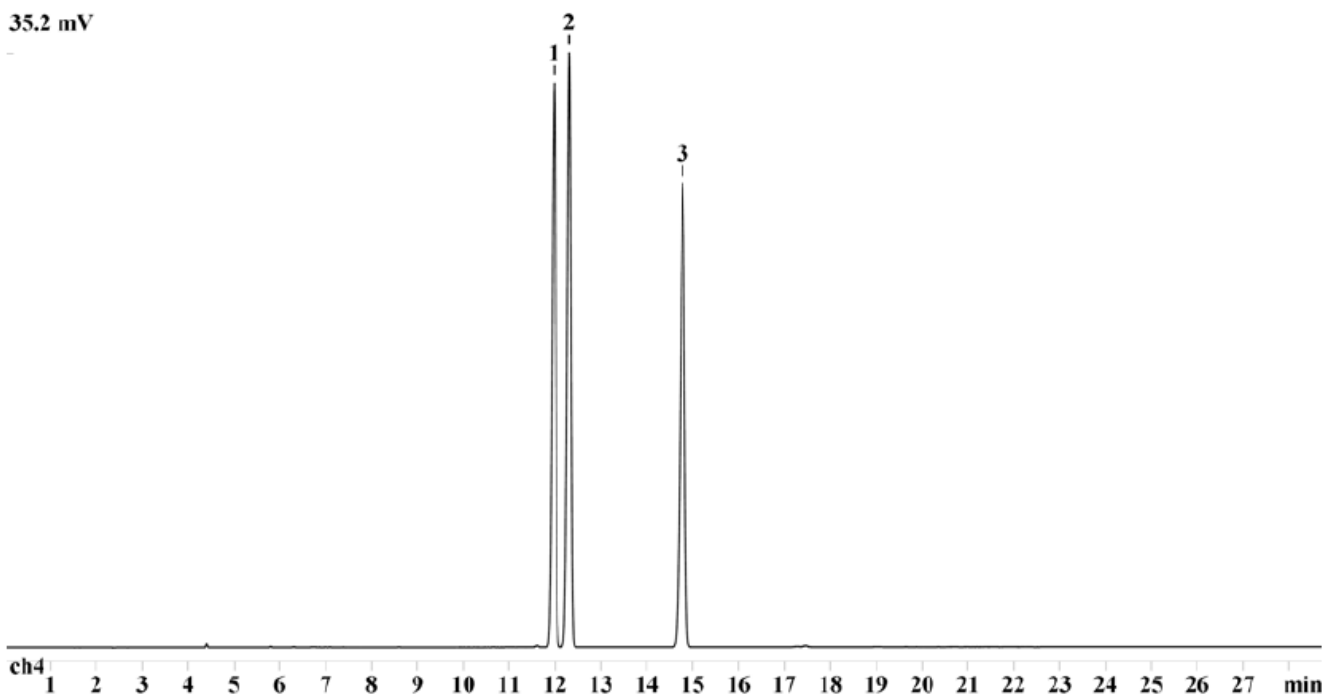
Trärgas

0,4 bar N2

Detektor

FID 340°C

35.2 mV



1.) p-Xylol

3.) o-Xylol

2.) m-Xylol