



Belegung

FS-Innopeg-1000

ID 0,25mm, df 0,25µm, Länge 50m

Max. Temperatur: 240/260°C

Dimensionen

50 m x 0,25 mm ID, df 0,15 µm

Artikel Nr.

[22516750](#)

Probe

Xylole

Substanzen: o-Xylol / m-Xylol / p-Xylol

Ofen

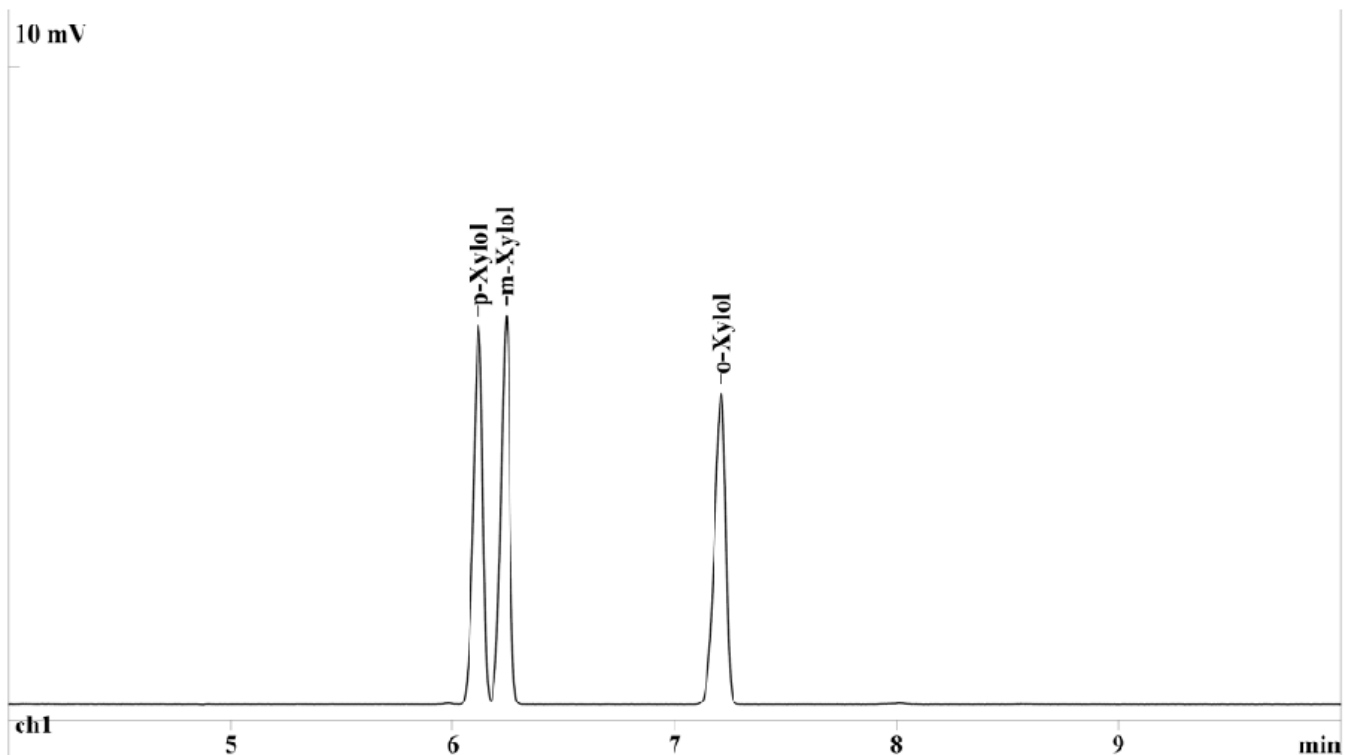
80°C

Trägergas

0,5 bar N₂

Detektor

FID 340°C



1.) p-Xylol

3.) o-Xylol

2.) m-Xylol